

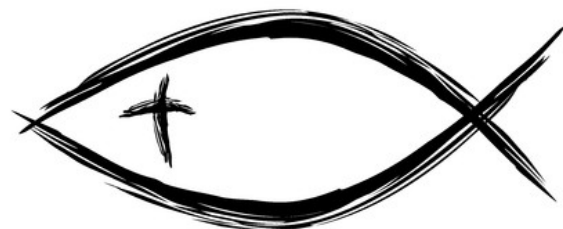


- 1 Connie Kelsey
- 7 Gordie Barry
- 7 Marcia Tevelde
- 13 John Haskell
- 23 Kathleen & Michael Haynes
- 28 Ellen Derber

First United Methodist Church
190 N. Cedar Street
Manistique, Michigan 49854

ASH WEDNESDAY

First Day of Lent



First United Methodist Church
Worship Service 11:00am



First United Methodist Church
Church Phone: (906) 341-6662
Pastor: Rev. B.J. Ash Cell: 906-286-1492
email: pastor@manistiquemethodist.org
Office Hours: Pastor B.J. M-F 10 am-2pm, Off Wed
Connie M-T work from home 10-2, W-TH 10-2 office
www.manistiquemethodist.org
email: office@manistiquemethodist.org

Are you looking for a way to
make your offering/giving
process easier?

Stop by the office and fill out an Electronic
Fund Transfer Authorization form.



Visit www.youtube.com and search
Manistique First UMC where you see the
magnifying glass at the top of the page.
Live worship services each Sunday at 11AM.



PASTOR'S WORDS

As
Christians,
do we feel
that
changing
times and
changes in
our con-
gregation
and com-
munity

compel us to plan ahead? While we find strength in our faith in God, do we want to make disciples and do we believe that He equips us to grow His kingdom? If you answered yes to any of these questions, you might agree that church planning is appropriate.

The purpose for planning is to map out the steps that we want to take in order to uphold our mission and to achieve our vision. Our Ad Council is initiating our church planning and thinking about what we will be like in 3 to 5 years. In our planning work, we will be asking you for your input and inviting you to attend structured meetings.

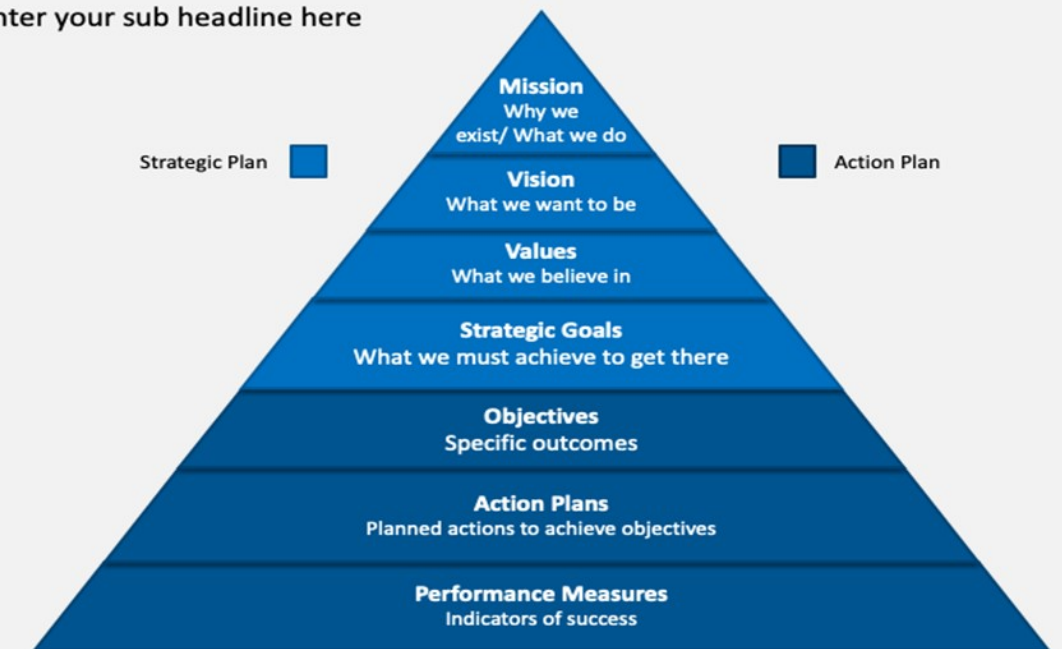
We will begin our planning process by reviewing our current mission, developing a 3-5 year vision, defining our values, and identifying our

STRATEGIC PLAN HIERARCHY

Enter your sub headline here

Strategic Plan

Action Plan



PASTOR'S
WORDS

strategic goals. Once we have accomplished that strategic aspect of planning, we will decide on objectives, action plans, and the performance measures that will tell us if we are on track with achieving our vision. Your specific thoughts on what will be needed for our church in the next 3-5 years matter, and your input is welcome and appreciated.

The Ad Council will begin this process in February. The meeting date and time will be announced prior to the first planning meeting. One vision that we see for our church is love exemplified through caring for one another. What do you see within our church?

Pastor B.J.

The Trustees Committee will not be meeting in February. Their next project will be front doors!



Thank you to the UMW volunteers and Trustees for working together in making the pasty sales a Huge Success!



Mark your calendars—

Lenten Soup/Devotions will begin on March 1st at 5 PM., followed by the devotion at 6 PM and every Wednesday during Lent. If you are interested in bringing a soup, dessert, or providing a short devotion, please sign up!

We are a Congregation that Cares for All!

We appreciate those who have been reaching out to meet the various needs of our congregation. We have people stepping up every day to offer a ride, a visit, a prayer, a call or a card. If you know of a need with which we can assist please pass it on to Pastor B.J. or Connie Kelsey. We love that everyone looks out for one another!



First United Methodist Church

We exist to joyfully share God's love,
preach the Good News, and make disciples.

February

SUN	MON	TUE	WED	THUR	FRI	SAT
			1 Connie Kelsey 🎈	2	3	4
5 Adult Sunday School 9:30 AM Worship 11 AM	6	7 🥟 Pasty Prep 10:30 UMW 1 PM As Parents Grow Older 1 PM FBC Gordie Barry 🎈 Marcia TeVelde	8 🥟 Pasty Prep 7:30 Sales 10am-1pm	9 🥟 Pasty Prep 7:30 Sales 10am-1pm	10 Bible Study 11 AM Prayer Group 12 PM	11
12 Adult Sunday School 9:30 AM Worship 11 AM	13 Ad Council 9 AM John Haskell 🎈	14 Valentine's Day As Parents Grow Older 1 PM FBC	15	16	17 Vitality 10 AM Bible Study 11 AM Prayer Group 12 PM	18
19 Adult Sunday School 9:30 AM Worship 11 AM	20	21 As Parents Grow Older 1 PM FBC	22 Ash Wednesday Service 5 PM	23 Michael & Kathleen Haynes 💍	24 Bible Study 11 AM Prayer Group 12 PM	25
26 Adult Sunday School 9:30 AM Worship 11 AM	27 Education 9:30	28 As Parents Grow Older 1 PM FBC Ellen Derber 🎈	<u>February Mission Noisy Offering —</u> <u>God's Country Cooperative Parish-Randy Hildebrandt</u> God is working through us. All donations will be accepted, drop it in as you enter or as you exit the sanctuary! Include your church envelope number if you want it tracked in your financial giving. Thank you for your support!			

Prayer Chain

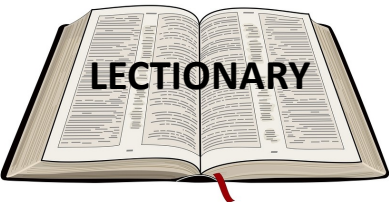
As many of you know we have a group in this church, called the Prayer Chain, that offers daily prayers for individuals, situations, and problems brought to them. Prayer requests can also involve individuals, situations, etc. outside our church community. These prayer requests may be called in to Pastor B.J. Ash at 906-341-6662 (church) or 906-286-1492 (cell). You may also call Gayle Tufnell at 906-341-2379.



Visit www.facebook.com and search 1st United Methodist Church where you see the magnifying glass at the top of the page.
Live worship services each Sunday at 11AM.



Newsletter suggestions are always welcome!
If you have anything you wish to have published in the March newsletter submit before **February 20th, 2023** deadline.
Pictures and other additions can be emailed to : office@manistiquemethodist.org



December Mission Noisy Offering for Adopt-A-Family Christmas Boxes collected \$23.00!
January Mission Noisy Offering for Ministerial Association will be announced soon.
Thank you for your support!

- February 5** — *5th Sunday After Epiphany*
Isa 58:1-9a (9b-12); Ps 112:1-9 (10) (UMH 833); 1 Cor 2:1-12 (13-16); Matt 5:13-20
- February 12** — *6th Sunday After Epiphany*
Deut 30:15-20; Ps 119:1-8 (UMH 840); 1 Cor 3:1-9; Matt 5:21-37
- February 19** — *Transfiguration Sunday*
Ex 24:12-18; Ps 99 (UMH 818); 2 Pet 1:16-21; Matt 17:1-9
- February 22** — *Ash Wednesday*
Joel 2:1-2, 12-17; Ps 51:1-17 (UMH 785); 2 Cor 5:20b-6:10; Matt 6:1-6, 16-21
- February 26** — *1st Sunday in Lent*
Gen 2:15-17, 3:1-7; Ps 32 (UMH 766); Rom 5:12-19; Matt 4:1-11



FOR OUR PRAYERFUL CONSIDERATION
Let us please keep the following people in our prayers: **Connie Meade, Mary Prater, Katie Putnam, Mary & Bob Whinnen, Phyllis Burge, Jo Nell Rubick, Martha Weeks, Joel Prater, Ted Burson, Penny Tracy, Connie Whatsitt, Jason Coryell (cancer free), Kali Lewis, Kerry Billings family, and Gail (Connie Kelsey's sister).**



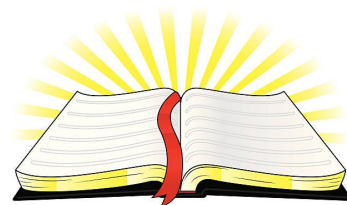
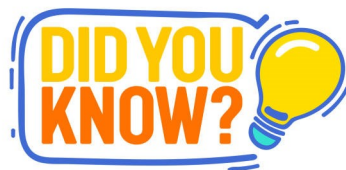
A View From the Belfry February, 2023

Greetings from the belfry! You know, I don't really know what to make of this winter. Usually along about November or early December, you can count on it being winter. The snow comes and stays until about March or April or sometimes May, when it leaves. Oh, we often have a January thaw, but even that doesn't usually take the snow down to bare ground all over. This year, we've had a severe winter in the form of deep snow, followed by a major thaw resulting in bare ground, followed by another big snow, then another thaw with bare ground...well, you get the picture. For a bat it's really confusing. We sleep, then have to wake up too early, then we sleep again only to get up too early again. What's a bat to do, anyway? What I don't understand is, how can all you people take this in stride? Oh, I hear you commenting on the weather, but you don't seem terribly upset when it isn't what you expected. You simply attribute it to being typical unpredictable Michigan weather and go on about your business. Frankly, as a bat I'm puzzled by this, but I'm also impressed. Even when the weather isn't what you expected, you cope. You shovel snow in May if that's when it falls, and don't shovel it in January if it doesn't fall then. You're flexible! That must be nice, to be flexible! Well, maybe I should back up a little here. In some things, you're flexible. However, in other things, you seem to have trouble with this. Sometimes, unlike with the snow when you shovel it when it comes and don't when it doesn't, instead of flexibility, I hear, "But we've NEVER done it that way before!" At other times I hear, "But we've ALWAYS done it that way before!" That seems to be when you're discussing things like trying music from the black hymnal instead of the red one, or even more likely, when somebody proposes using a different style of music entirely. Or I hear it when somebody proposes rearranging the furniture in the sanctuary, or replacing the piano and organ with a drum set and electronic keyboard. It seems that half of you love everything the way it is right now, while the other half loves change and experimenting with new things. It puzzles me a bit because I am only a bat, so I don't quite always get what the concerns are. However, that doesn't mean I plan to leave this church any time soon. Nope! I want to hang around and see what's going to happen next! You may try something new and really love it. If so, that's great! Or, you may try something new and think it stinks! If so, reject it and either try something else or go back to what you did before. Even if you don't like it, you've learned something new, see if it works, and then decide whether to keep it or not. It may also be a good time to remember that flexibility can be a good thing, as long as you retain the solid foundation of your faith as what grounds you. The foundation should indeed remain unchanging, but what you build on that foundation may just be amenable to flexibility! (Gee, that's pretty profound for a bat! Maybe I should write an advice column for the local newspaper! I could call it Benny's Batty Advice! Well, no, maybe not...)

Lay Leader Lines
February, 2023

Q: I've heard someone thinks we should replace the piano! Why? It sounds just fine to me!

A: Recently we had the piano tuned, as we do periodically as part of the routine maintenance of the instrument. The piano technician suggested it may be time to consider getting a new piano. He based this on the age of the one we have now, which is approximately 80 years old, and on the condition of this one. While we have maintained it in good condition, it is showing signs of wear due to its age. While we can still use it, we cannot expect it to last forever in prime condition. Since replacing a piano can be a major expense, we might wish to start exploring our options now, so that when the time comes that we really need to do something, we will be ready and able to do so. Nobody is saying that we have to do it tomorrow, but the time will come when we will need to seriously consider a change. Among other things, we may want to consider whether we should invest in a regular piano, an electronic piano, a keyboard, or something else entirely. This will be a major decision and one we should consider carefully as we plan on what we want the church and the services we provide to be like in the future. (Incidentally, the piano technician does not sell pianos and isn't simply trying to make a little more money from us by selling us one!)



1. Jesus took three of His disciples up a high mountain, where they witnessed His transfiguration. Which three disciples went with Him up the mountain?

- | | |
|-----------------------------|----------------------------|
| 1. James, Andrew, and Peter | 2. John, Peter, and Philip |
| 3. Andrew, James, and John | 4. Peter, James, and John |
| 5. Larry, Moe, and Curly | |

2. Who suddenly appeared to them on the mountain?

- | | |
|----------------------|----------------------|
| 1. Ezra and Samuel | 2. Moses and Ezekiel |
| 3. Moses and Elijah | 4. Joseph and Jacob |
| 5. Daniel and Samuel | |

You can find the answers to these questions in Matthew 17:1-3.



United Methodist Women News
Submitted by Carol Weinert

Here we are, well into a new year, with many New Year's resolutions made and some already broken.

In case you want to add on or start over, may we suggest it is not too late to join in the 2023 Reading Program sponsored by United Women of Faith (still called United Methodist Women at our church). There are many books in this program available in our church library on many interesting subjects. See Phyllis Burge for more information on the Reading Program. Read and be informed!

The next regular meeting of the Manistique United Methodist Women will be Tuesday, Feb. 7, at 1 PM at the church. The program will feature a service of Prayer and Self-Denial. Events of the upcoming year may also be discussed, including our annual Lenten Soup Suppers (Ash Wednesday is Feb. 22 this year) and the Reflection Breakfast (April 1). It's not too early to plan.

Books are available
on the table in the
Fellowship Hall.
Help yourself,
they are Free!



Praise God! Carol Weinert has made a remarkable recovery and is ready to coordinate the Prayer Chain calls. If you have a request please call Carol or Pastor B.J..

Thank you, Gayle Tufnell for volunteering as our coordinator while Carol recovered!

You both are a true blessing!

Just a friendly reminder that our handicap parking spaces are for those that need them most!